

NEW HAMPSHIRE PYRAMID MODEL STATE LEADERSHIP TEAM ANNUAL REPORT

July 2023 - June 2024

In 2017 New Hampshire became the **28th Pyramid Model State**. The Pyramid Model (PM) is a national framework for implementing a culturally responsive and equitable multi-levelled system of supports designed to enhance social and emotional competence of young children, promote the development of supportive program policies and practices, as well as providing early care and education providers with practice based coaching to ensure that evidence based practices are integrated and used with fidelity.

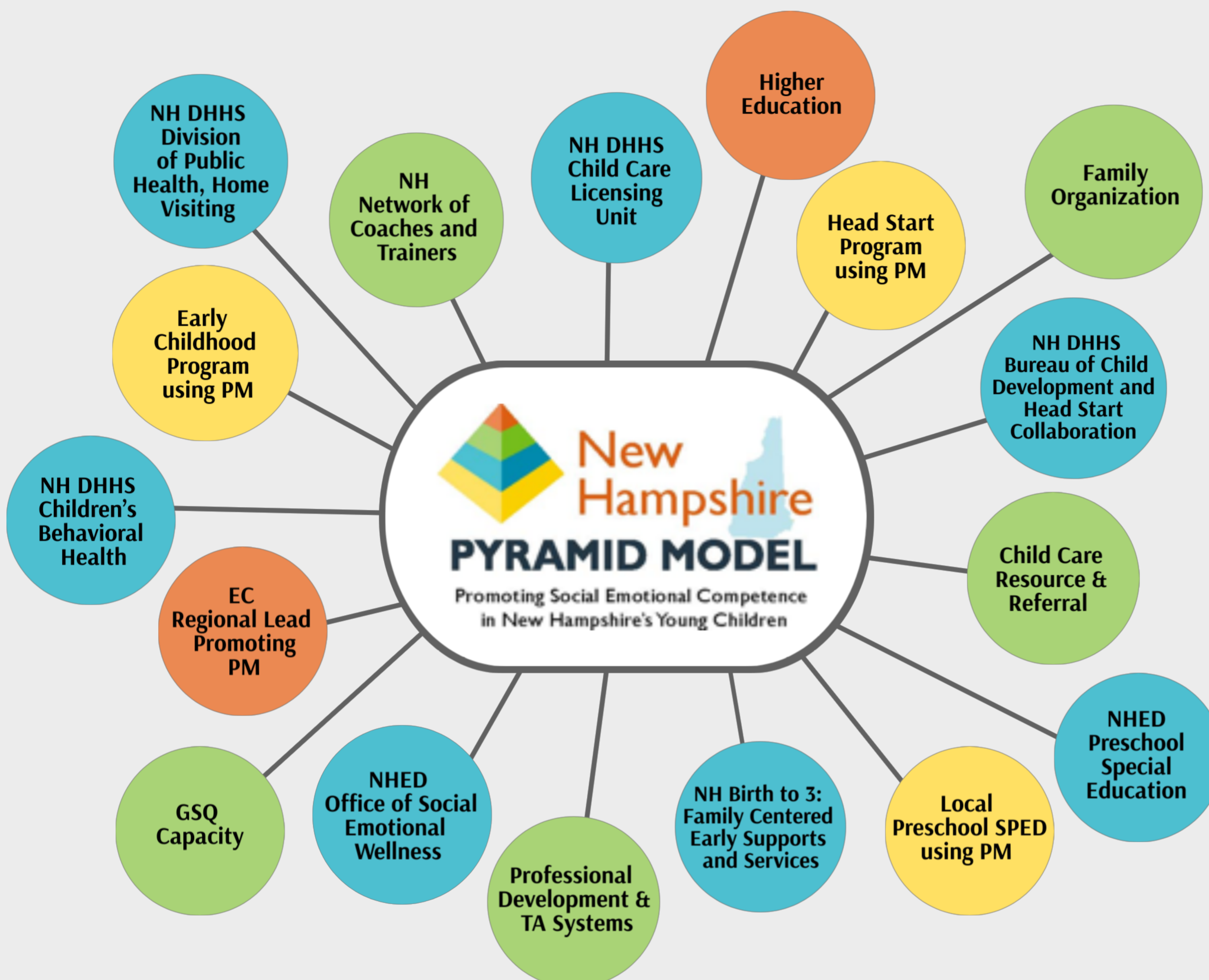
Vision & Mission

Vision Statement:

New Hampshire families, early childhood programs and communities provide environments that nurture, promote and facilitate the social emotional development and learning of all young children, birth through six years.

Mission Statement:

The NH Pyramid Model SLT establishes and maintains a sustainable state infrastructure that supports high fidelity implementation of the Pyramid Model in early childhood care and education settings statewide.



These areas of representation make up the cross-sector State Leadership Team (SLT) that meets bi-monthly to support the implementation of PM statewide.

Graphic Key

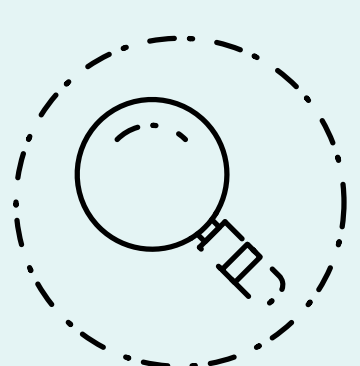


This report is organized by the 4 essential elements a Pyramid Model State is required to have in place. These elements include:

- Cross-sector State Leadership Team
- Network of Program Coaches and Trainer
- Implementation Sites
- Data/Evaluation

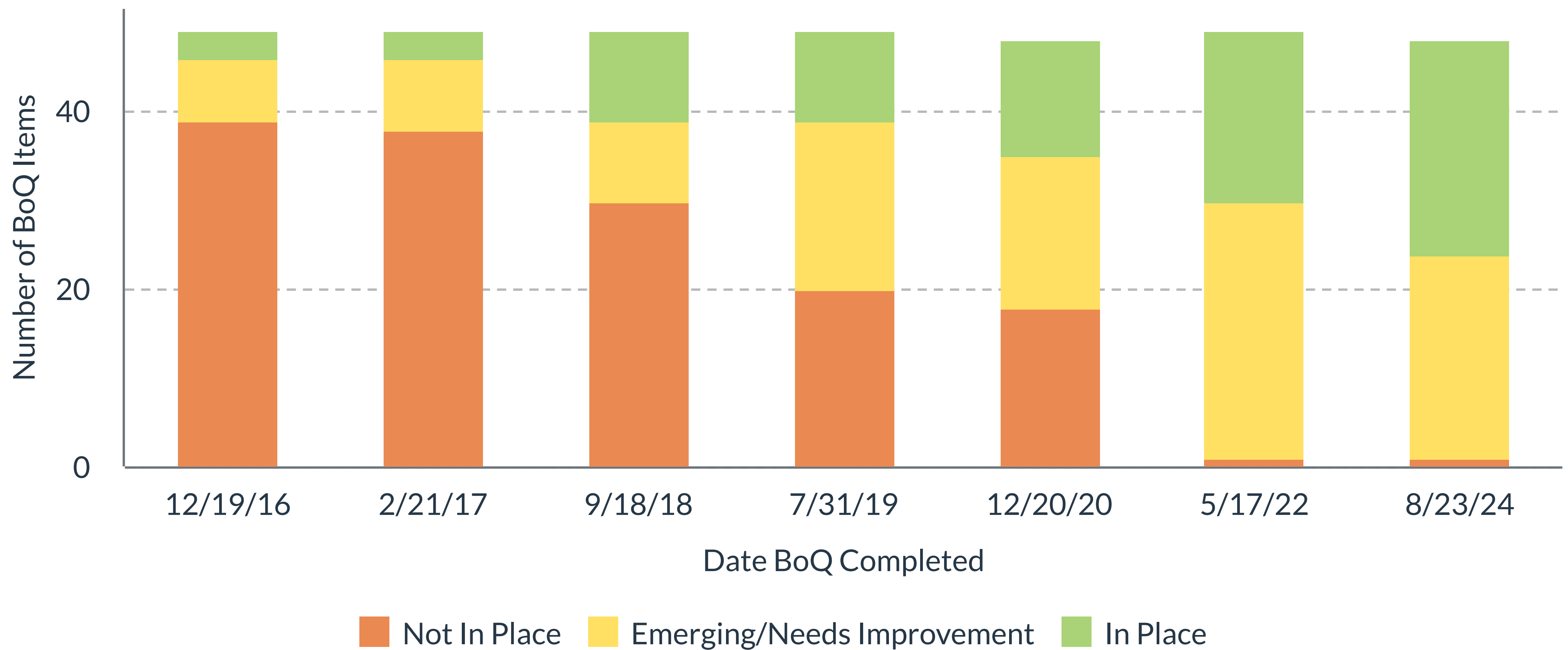
Helpful Abbreviations and Acronyms

- **NH DHHS** - New Hampshire Department of Health and Human Services
- **NHED** - New Hampshire Department of Education
- **PTAN** - Preschool Technical Assistance Network (affiliate of Pyramid Model Consortium)
- **FCESS** - Family Centered Early Supports and Services
- **SLT** - State Leadership Team
- **GSQ** - Granite Steps for Quality - NH's Quality Rating and Improvement System



SEVEN YEARS OF GROWTH

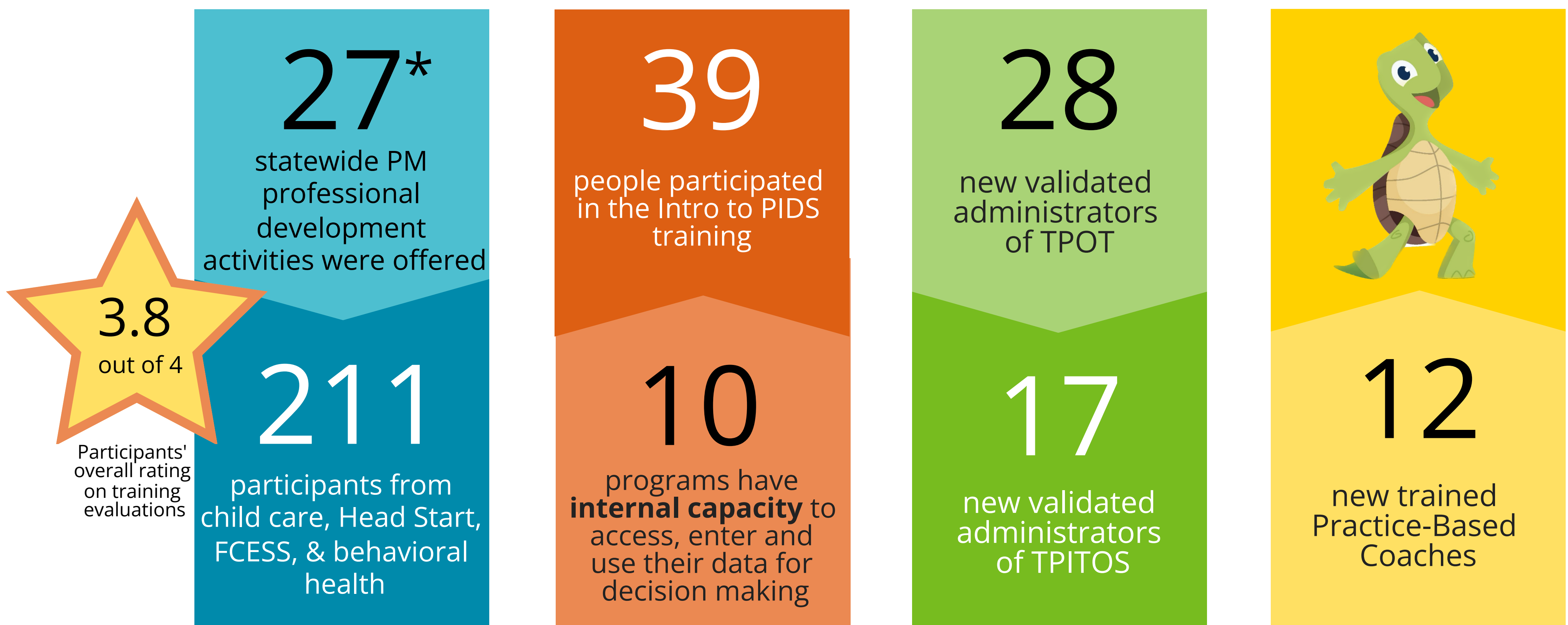
State Leadership Team Benchmarks of Quality (BoQ)



This graphic illustrates the impact of the SLT's efforts over the past 7 years to establish the infrastructure required for statewide Pyramid Model implementation.

PROFESSIONAL NETWORK OF COACHES AND TRAINERS

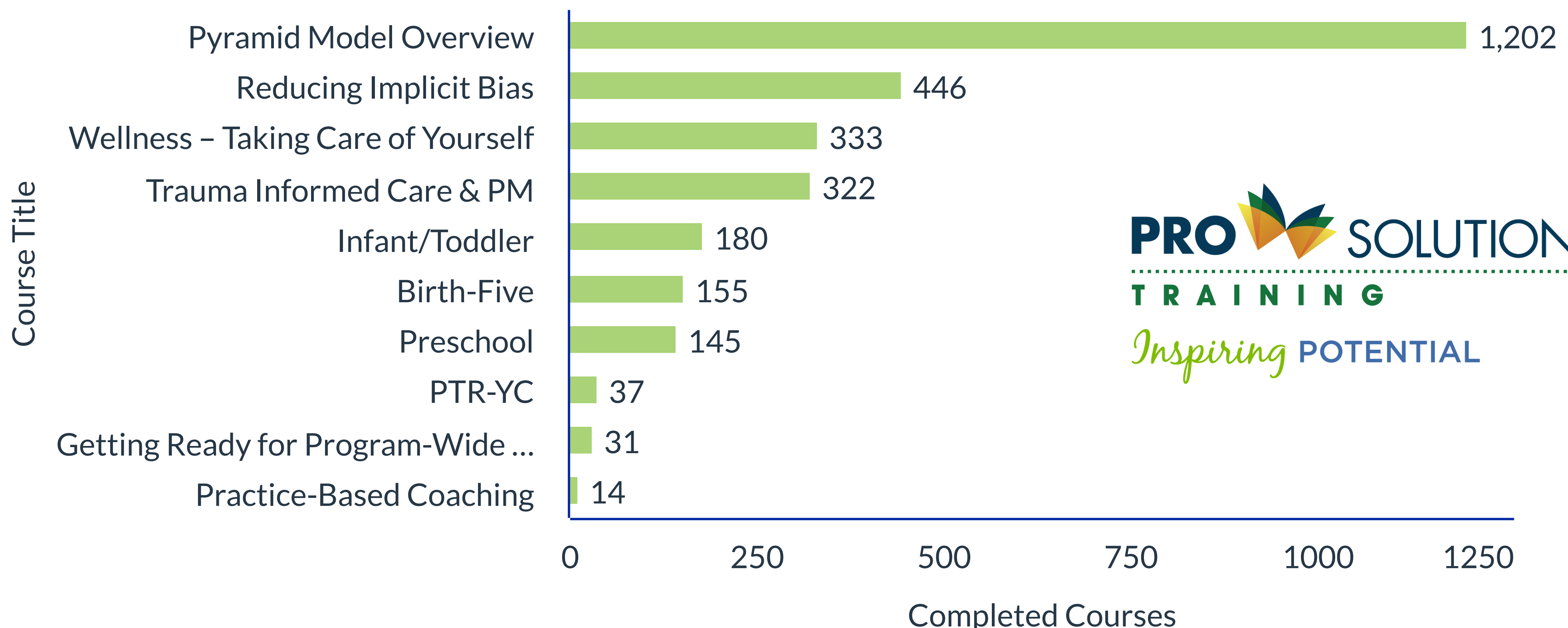
PTAN currently has the capacity to deliver all PM training content including TPOT and TPITOS.



*All trainings and PLC's were sponsored by PTAN.

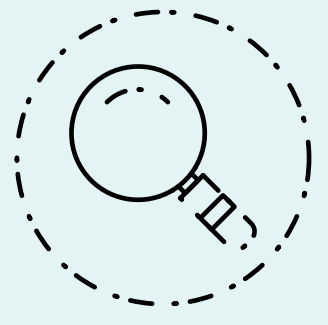
ePYRAMID COURSES COMPLETED

Through a collaborative funding agreement between NHED and NH DHHS, NH teachers, administrators, students, and residents have **free** access to 10 ePyramid courses, on the ProSolutions training site, covering 83 training hours.



IMPLEMENTATION SITES

Short term GSQ Capacity Funds infused additional money into the PTAN contract to increase the number of practitioners, fidelity tools and training.

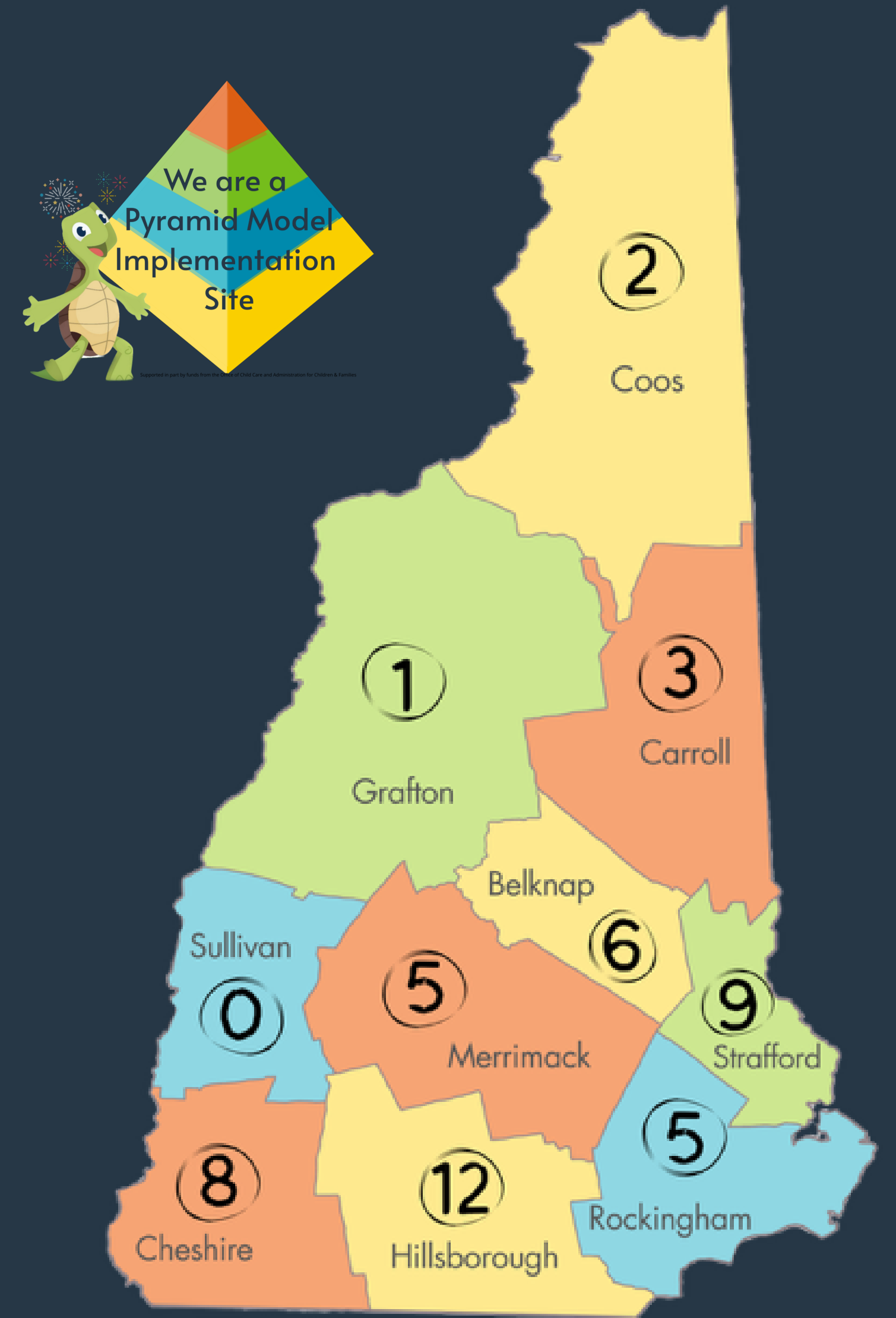


PIDS (Pyramid Model Implementation Data System)

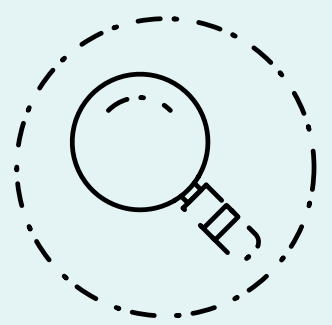
is an online platform created to enter and store all data related to the Pyramid Model.



This map designates the GSQ, Head Start and community PM implementation sites that entered PIDS data during the report period. Each number in the county represents the number of sites in that county. It may not be inclusive of all implementing programs in NH.

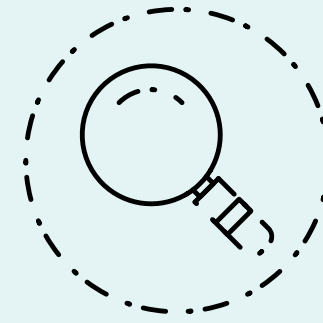


94 TPOTs Administered



TPOT (Teaching Pyramid Observation Tool) Research-based assessment tool that measures implementation of teacher practices associated with the Pyramid Model for Promoting Social Emotional Competence in Young Children in classrooms serving children ages 2-5 years.

67 TPITOS Administered



TPITOS (Teaching Pyramid Infant-Toddler Observation Scale) Research-based assessment tool that measures implementation of teacher practices associated with the Pyramid Model for Promoting Social Emotional Competence in Young Children in classrooms serving children ages birth-3 years.

32

programs completed their annual Program-Wide Benchmarks of Quality



Total number of programs on the GSQ PM Pathway

The SLT is coordinating efforts across various early childhood sectors throughout the state. This infographic highlights possible on-ramps to connect to Pyramid Model supports.

"I always thought our program was high quality. We have degreed teachers, low ratios, an attention to detail...we were doing pretty well. Then we started working with our Pyramid Model coach, and I learned just how much further we had to go. The Pyramid Model took us from a "pretty good" program to an "outstanding" program in terms of quality."

- Libby Brunette
Director
The Applewood Learning Center
Londonderry



A major focus and area of growth starting in 2023 was around the scale up the Child Care Pathway.

A LOOK AT FAMILY ENGAGEMENT



19 programs participated

212 surveys were received

In March 2024 the SLT disseminated a Family Survey to all GSQ PM Pathway sites. The data collected will help inform the State's and individual programs' improvement efforts.

Strengths	Areas that Need Growth
<p> Programs communicate & provide materials in preferred language</p>	<p> Teachers share information about child's social-emotional skill development on a regular basis</p>
<p> Teacher knows the best way to reach families</p>	<p> Families being provided information about the PM and how it supports child development</p>
<p> Families feel supported and welcomed to bring concerns to program administration</p>	<p> Teachers providing families with information on the importance of social-emotional development</p>

“ There is unity and consistency across the board. If I notice anything concerning at home with behaviors/needs they are willing to engage in planning and talking through what would help your family. They don't just get to know the child- they get to know the family as a whole. ”

Family Centered Early Supports and Services (NH Birth to 3) and the Pyramid Model framework both emphasize collaboration among early intervention team members and families, with a focus on building the capacity of professionals and families supporting young children's social and emotional development through implementing interventions to prevent and address challenging behaviors and enhance healthy relationships. PM implementation is being piloted in 3 FCESS programs with the hope of adding 3 more sites the next year.

Increasing capacity of professionals and families to support young children's social and emotional development

Reducing challenging behaviors and increasing social skills in young children

Implementing interventions to prevent and address challenging behaviors, enhancing healthy attachment relationships.

Looking Ahead...

Statewide access to Positive Solutions for Families

Statewide scan of Pyramid Model Implementation Sites

Build out pathways and secure funding for Special Ed Preschool and Home Visiting

Head Start and Early Head Start program-wide implementation with fidelity

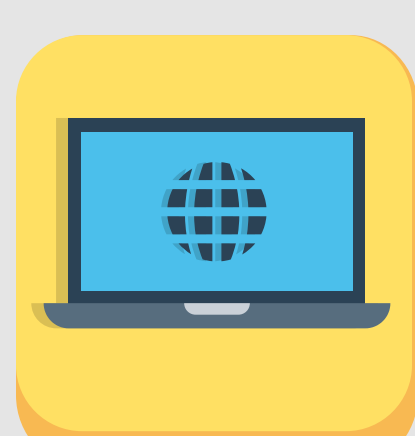
This report was developed by the SLT's Communication and Public Relations Workgroup with support from PTAN and the Pyramid Model Consortium.

Stay Connected!

Follow us on Facebook



Visit our Webpage



To learn more about Pyramid Model implementation in New Hampshire contact Joan Izen
joan.izen@gmail.com

